

YUNO II

Universal multi-configuration integrated system

Robust, yet compact and stylish POS system

YUNO II is a new generation of the YUNO POS system ; robust, stylish and compact, it suits the many applications of the POS vertical sectors.

A fanless, flexible and high-performance hardware, it offers a choice between 3 different INTEL 11th generation processors (Tiger Lake & Elkhart Lake) ; the system is available in 2 formats (traditional 4:3 15.1" screen and Wide 16:9 15.6" screen with Full HD) and equipped with a shock- and scratch-proof, multi-touch, projected, capacitive screen (10 point PCAP technology).

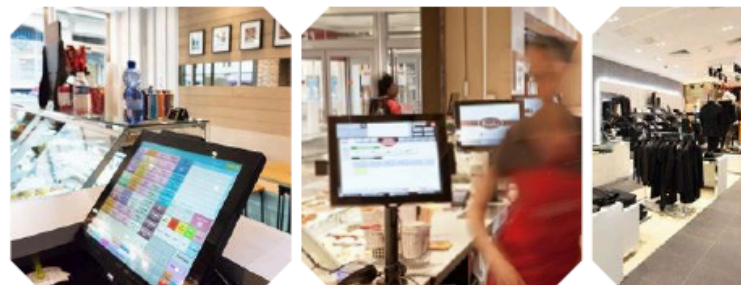
Very flexible, YUNO II is available with VESA fixings options (for wall or pole mounted solutions).

The standard version features a NVMe-M.2 flash disk and stands up to dirt in the toughest settings (fat, crumbs, dust, splashes and leftovers in kitchens, restaurants and bakeries). It integrates energy efficient processors (J6412, or i3-1115G4E, or i5-1145G7E) and a heat-dissipating aluminium



structure, ensuring compliance with environmental standards (low carbon footprint).

YUNO II is an accessible product whose many features (technology, ergonomics, flexibility and design) make it good value for money. It constitutes a sensible, cost effective and long-term POS IT investment.



YUNO II



11th generation of INTEL processors (J6412, i3-1115G4E, i5-1145G7E)
(Energy efficient processors for low carbon footprint)

SSD 2 slots

Projected, capacitive, multi-touch screen (10 point - PCAP)

4:3 or 16:9 formats (15.1" or 15.6")

RAM 4 or 8 GB (standard) – up to 32 GB

Tilting base: 0-90°

Discreet yet easily accessible connectivity

2nd screen output

Available with VESA bracket option(s), for wall and pole mounted installations

Thinner base for a light design

Detachable magnetic rear cover (easy and quick to remove/replace)

Resistant and accessible on/off button

Transparent status LED lighted AURES logo on the left side of the base (green / red)

Easy maintenance (the most compact motherboard in the market)

2 LAN port (1 LAN port on model with J6412 processor)



Specifications are subject to change without notice - © AURES - YUNO-II_datasheet_EN_1.20_2023

MODEL	YUNO II
-------	---------

Processor(s)	INTEL Elkhart Lake J6412, Tiger Lake i3-1115G4E or i5-1145G7E (fanless)
RAM	DDR4 – 4 GB (standard J6412), 8 GB (standard i3/i5) up to 32 GB
1 st SSD	NVMe PCIe 3.0 x4 Standard : 1 x 128 GB up to 512 GB (J 6412) or 1 x 256 Go up to 512 GB (i3/i5)
SSD 2 nd slot	NVMe PCIe 3.0 x2 / SATA M.2
LCD	15" TFT (1024 x 768) or 15.6" (1920 x 1080) (wide format in full HD) LED back-lighting
Touchscreen	Flat, zero bezel & multi-touch screen with projected, capacitive panel (10 point PCAP)
Brightness	15" 400 cd/m ² , 15.6" 450 cd/m ²

INPUT-OUTPUT PORTS	
--------------------	--

Serial	2 x serial ports (RJ50 connector)
USB	6 x USB 3.0 2 x USB-C (1 to CPU)
LAN	2 x 10/100/1000Base-T (1 x LAN for J6412 model)
External display	Port with support for HDMI, DVI and VGA (via USB-C)
Cash Drawer	24/12 V DC
Audio	Internal loudspeaker
Power Supply	+ external 19v. DC
TPM2.0	on all boards

MISCELLANEOUS	
---------------	--

EMI	CE/FCC Class B, UL, RCM, UKCA
VPRO	on i5 version
Operating Temperature	0-35 °C
Front	Dust- and splash-proof
Colour	Black (grey base)
Materials	Polycarbonate (cover) + aluminium (structure)
MTBF (screen)	50,000 hours
Dimensions (W x D x H)	342.9 x 167.5 x 303.8 mm (15.1" format, with vertical screen) 382 x 170.5 x 276.1 mm (15.6" Wide format, screen vertical)
Weight	5.5 - 6.5 kg depending on the option (15.1" format) 6.5 - 7.5 kg (15.6" Wide format)
Compatible OS	Windows 10 IoT Enterprise, Windows 11, Linux, Android X86

OPTIONAL EXTRAS	
-----------------	--

Multi-Technology Card Reader	for combined reading of MSR and RFID (high and low frequencies), Bluetooth (BLE), NFC...
Addimat and/or Dallas readers	1 slot, at right of EPOS terminal
Bare-code scanners	1D & 2D
Fingerprint reader	Yes
Customer display	20 characters x 2 lines LCM
2 nd screen (touch or non touch)	10.1" - 16:9 1280 x 800 Flat LED screen
WiFi	via BT/Wi-Fi USB key (same as for JAZZ/TWIST systems)
VESA fixings option(s)	Optional brackets
Anti-glare touch screen	
White Cover	